

Vals etter Smed-Jens II

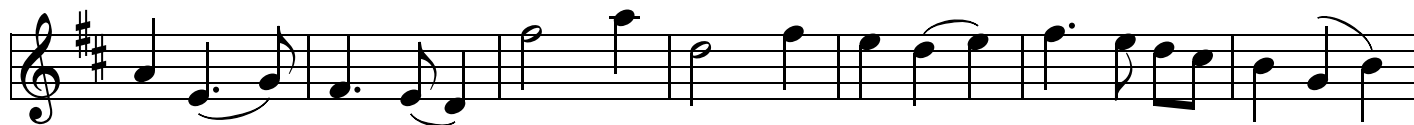
401

♩=150

1. fele



7



14



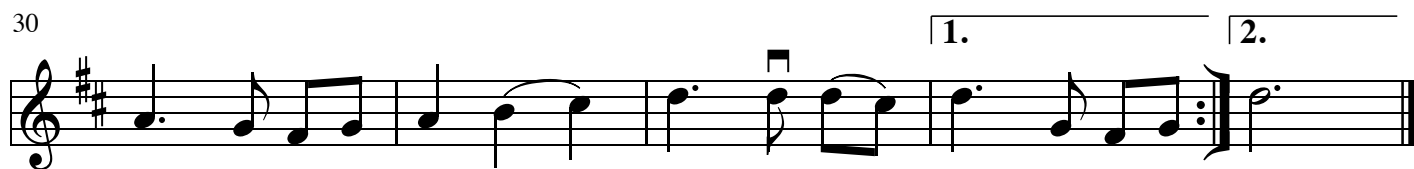
20



26



30

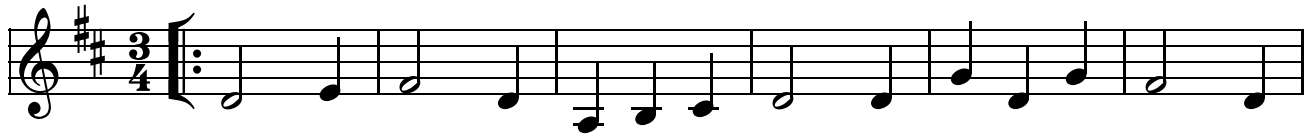


Vals etter Smed-Jens II

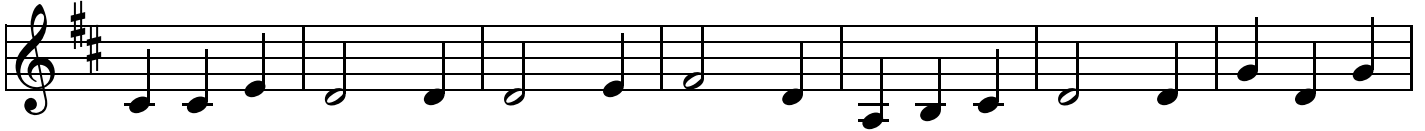
401

♩=150

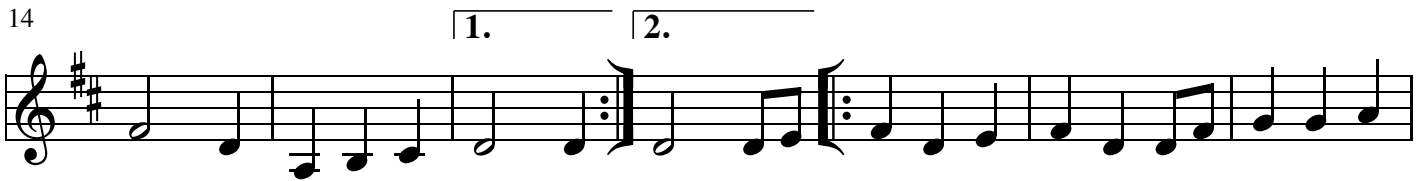
2. fele



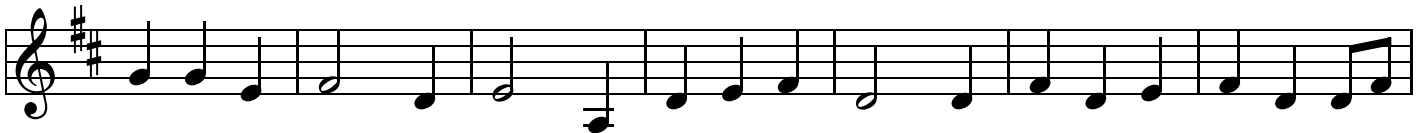
7



14



21



28



Vals etter Smed-Jens II

401

♩=150

3. fele



G1

G1

8



G1

G1

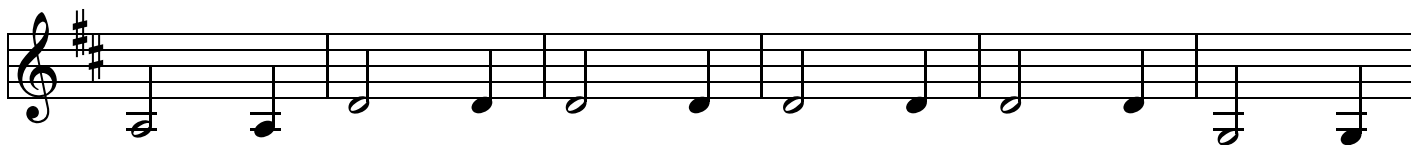
16

1. 2.



G1

23



29

1. 2.



G1